

Catalog for Diesel Locomotive

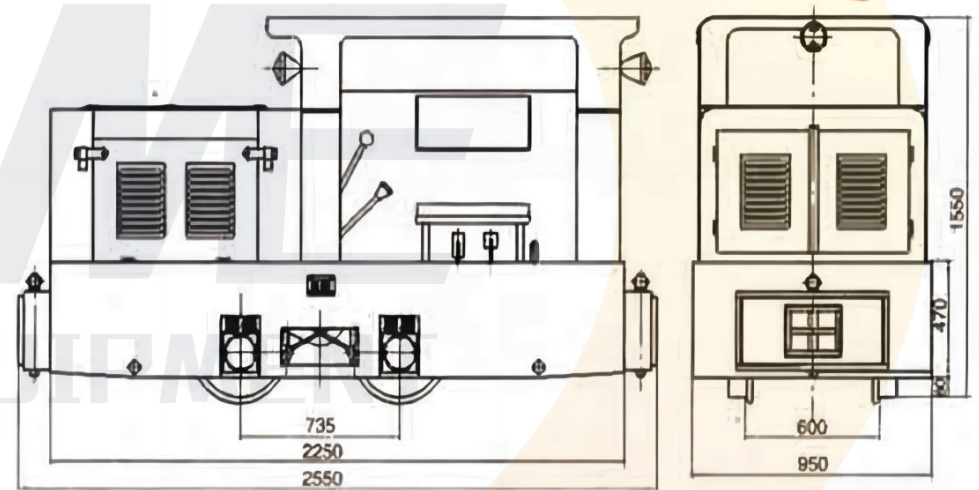
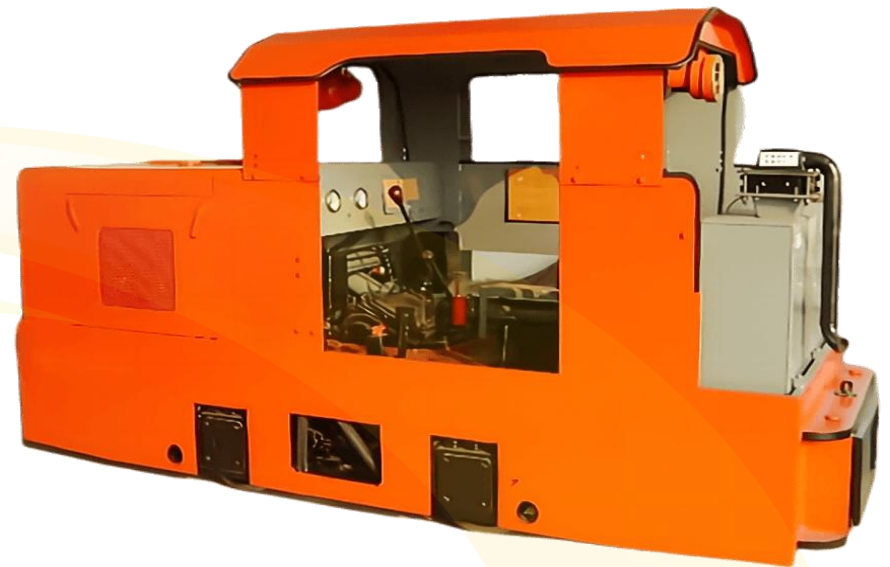


CHANGSHA MINING EQUIPMENT CO., LTD.

No.266 Honglian Road, Yuhua District, Changsha City, China

CCG2.5 Diesel Narrow Gauge Locomotive

N.	Specifications/ Parameter	CCG2.5
1	Dimension(L×W×H)	2550×950×1550mm
2	Track Gauge	600/762 /900 mm
3	Cohesive Weight	2.5 Ton
4	Traction	3.8 KN
5	Loading Capacity	15 ton (slope≤5‰)
6	Max. Speed with No Load	10.3 km/h
7	Rated Motor Power	11KW
8	Min.Curve Radius	5m
9	Braking Type	Mechanical Type
10	Braking Distance	≤10m
11	Noise	≤90
12	Gear System	Forward , Backwards , Running Gearing Setting



Application scope

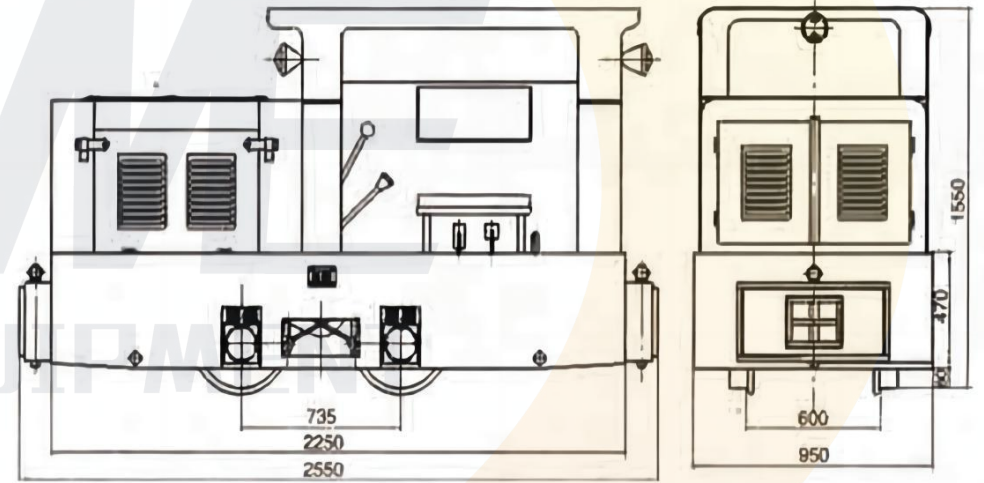
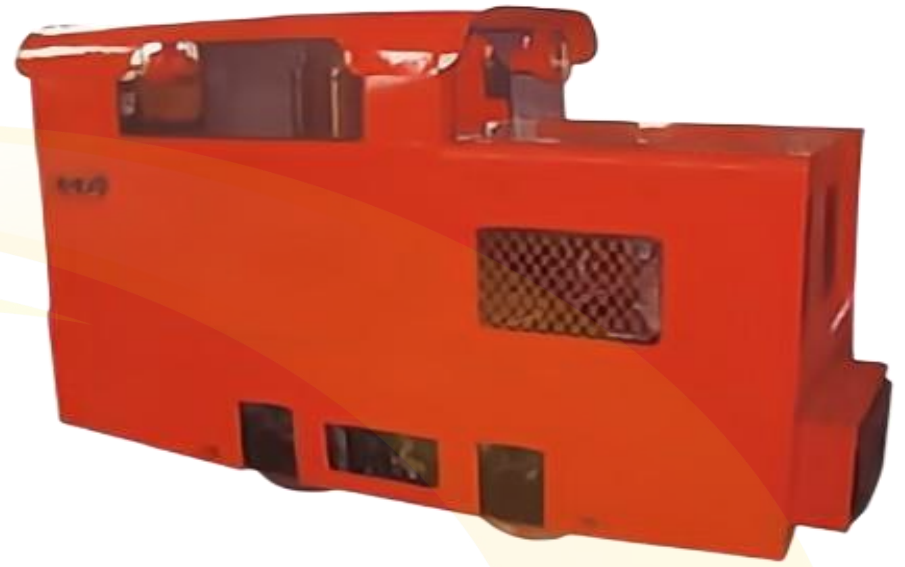
The CCG Series Diesel Narrow Gauge Locomotive is suitable for coal mines with gas and coal dust explosion hazard area.

Main features

- 1.The locomotive has simple structure, convenient operation, low maintenance cost,.It can effectively reduce the working intensity and has high transportation efficiency.
2. The locomotive is equipped with an exhaust gas purification device to eliminate pollution such as smoke and dust, ensuring a good working environment.

CCG3 Diesel Narrow Gauge Locomotive

N.	Specifications/ Parameter	CCG3
1	Dimension(L×W×H)	2550×950×1550mm
2	Track Gauge	600/762 /900 mm
3	Cohesive Weight	3.0 Ton
4	Traction	4.5 KN
5	Loading Capacity	20 ton (slope≤5‰)
6	Max. Speed with No Load	10.3 km/h
7	Rated Motor Power	12KW
8	Min.Curve Radius	5m
9	Braking Type	Mechanical type
10	Braking Distance	≤10m
11	Noise	≤90
12	Gear System	Forward , Backwards , Running gearing setting



Application scope

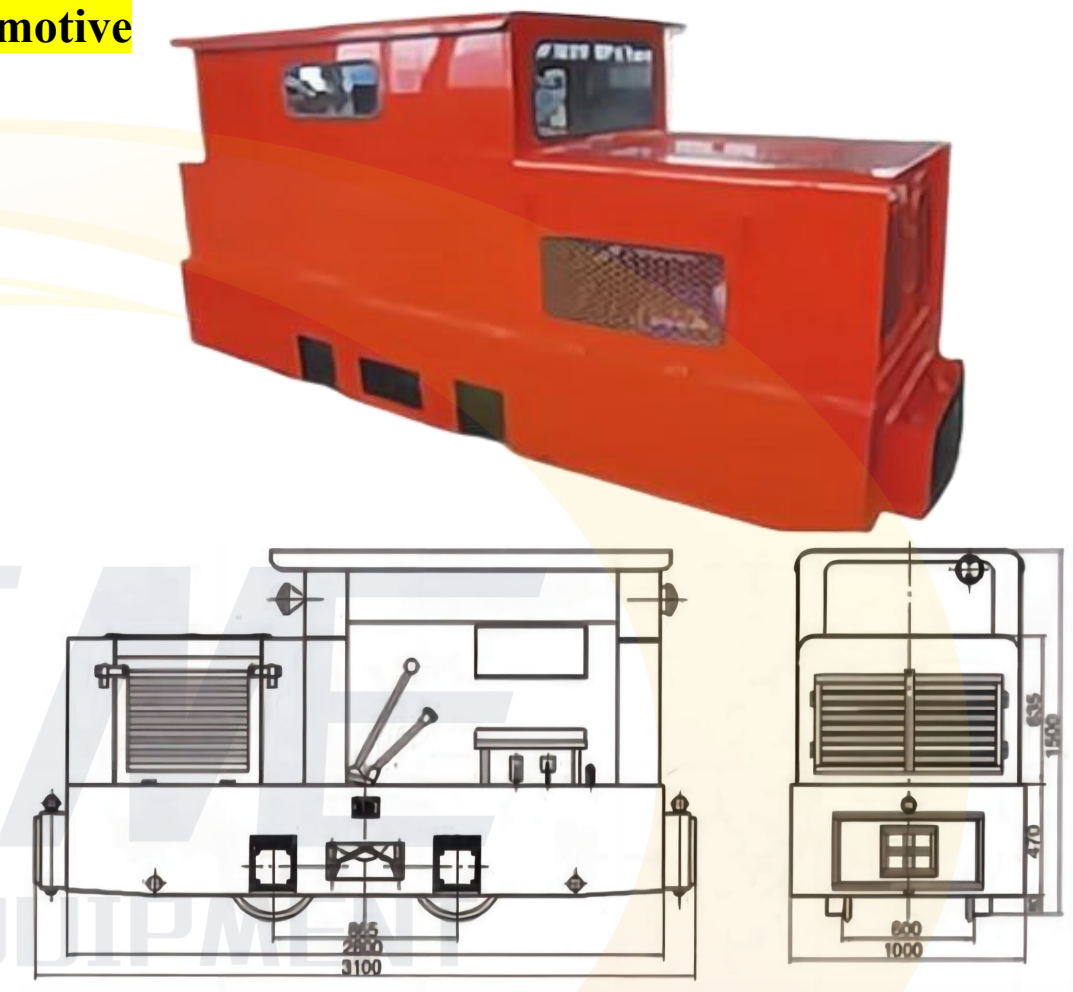
The CCG Series Diesel Narrow Gauge Locomotive is suitable for coal mines with gas and coal dust explosion hazard area.

Main features

- 1.The locomotive has simple structure, convenient operation, low maintenance cost,.It can effectively reduce the working intensity and has high transportation efficiency.
2. The locomotive is equipped with an exhaust gas purification device to eliminate pollution such as smoke and dust, ensuring a good working environment.

CCG5(Single Cylinder) Diesel Narrow Gauge Locomotive

N.	Specifications/ Parameter	CCG5(Single Cylinder)
1	Dimension(L×W×H)	3100×1000×1550mm
2	Track Gauge	600/762 /900 mm
3	Cohesive Weight	5.0 Ton
4	Traction	6.5 KN
5	Loading Capacity	30 ton (slope≤5‰)
6	Max. Speed with No Load	10.3 km/h
7	Rated Motor Power	13KW
8	Min.Curve Radius	6m
9	Braking Type	Mechanical type
10	Braking Distance	≤10m
11	Noise	≤90
12	Gear System	Forward , Backwards , Running gearing setting



Application scope

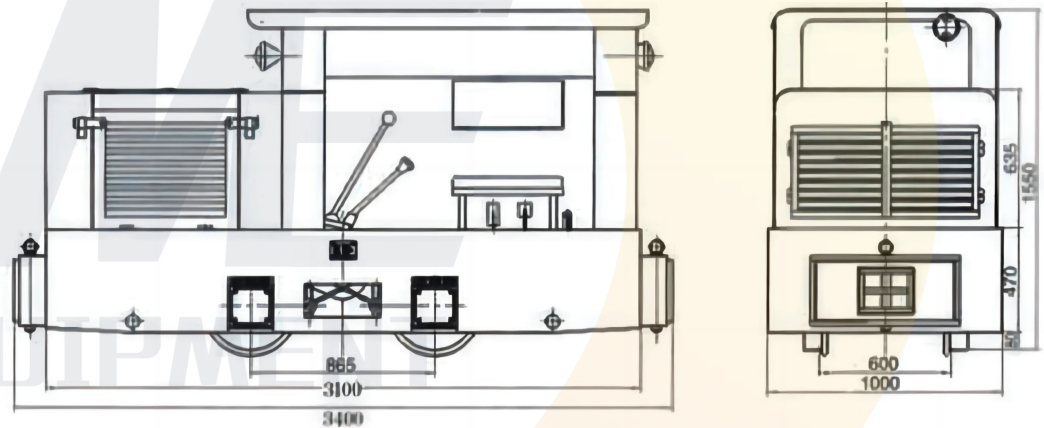
The CCG Series Diesel Narrow Gauge Locomotive is suitable for coal mines with gas and coal dust explosion hazard area.

Main features

- 1.The locomotive has simple structure, convenient operation, low maintenance cost,.It can effectively reduce the working intensity and has high transportation efficiency.
2. The locomotive is equipped with an exhaust gas purification device to eliminate pollution such as smoke and dust, ensuring a good working environment.

CCG5(Double Cylinder) Diesel Narrow Gauge Locomotive

N.	Specifications/ Parameter	CCG5(Double Cylinder)
1	Dimension(L×W×H)	3400×1000×1550mm
2	Track Gauge	600/762 /900 mm
3	Cohesive Weight	5.0 Ton
4	Traction	7.2KN
5	Loading Capacity	40 ton (slope≤5‰)
6	Max. Speed with No Load	10.3 km/h
7	Rated Motor Power	18KW
8	Min.Curve Radius	6m
9	Braking Type	Mechanical type
10	Braking Distance	≤10m
11	Noise	≤90
12	Gear System	Forward , Backwards , Running gearing setting



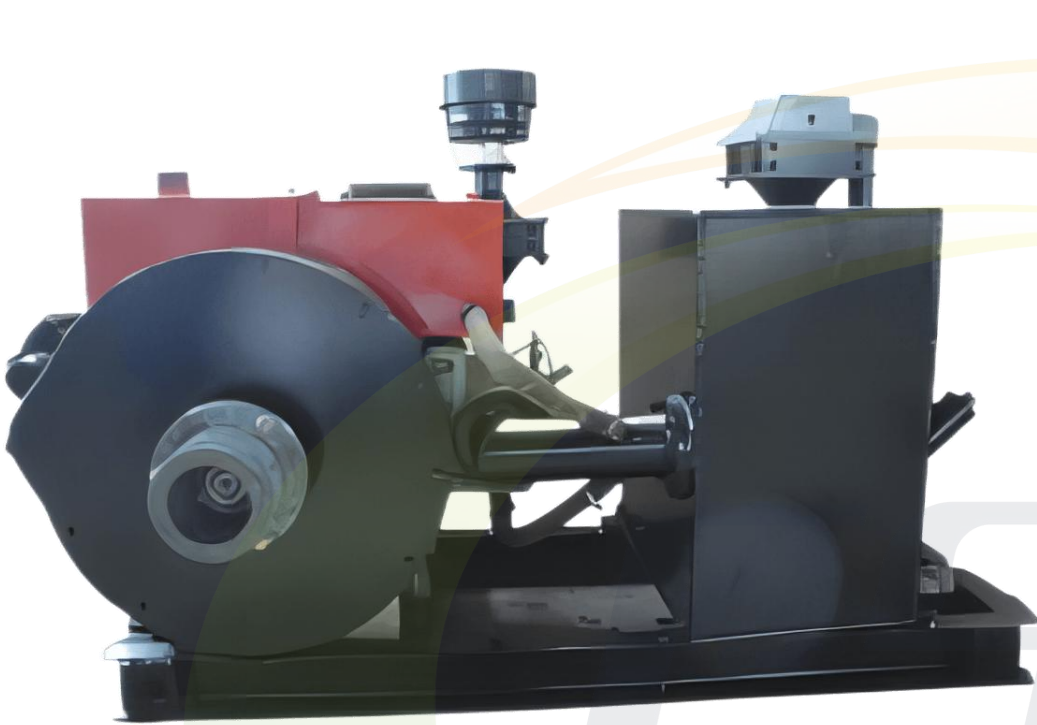
Application scope

The CCG Series Diesel Narrow Gauge Locomotive is fully closed, suitable for cold weather and underground coal mines with gas and coal dust explosion hazards

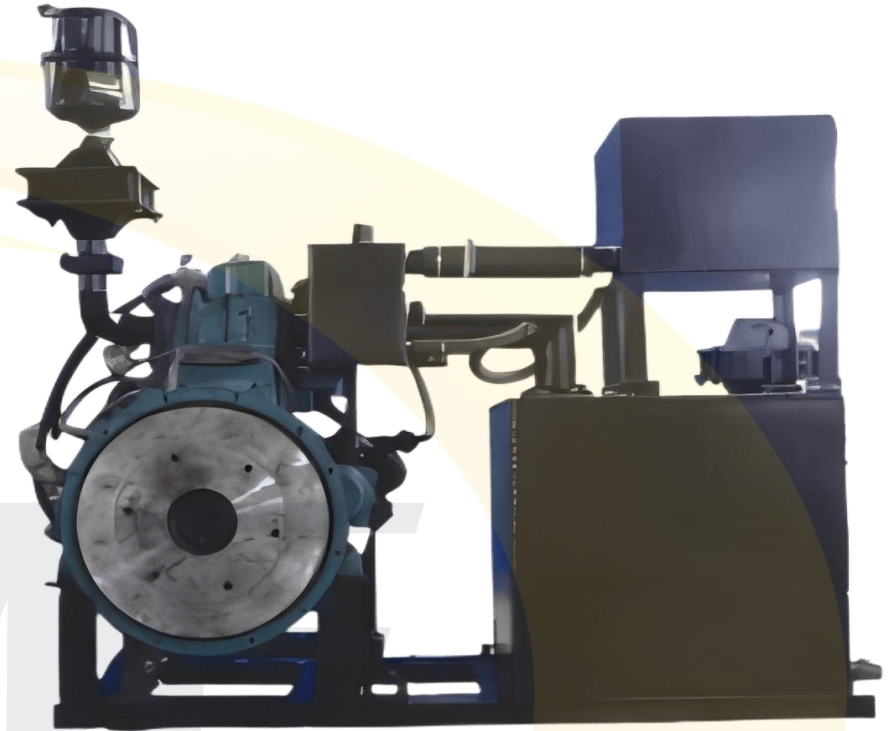
Main features

- 1.The locomotive has simple structure, convenient operation, low maintenance cost,.It can effectively reduce the working intensity and has high transportation efficiency.
- 2.The locomotive is equipped with an exhaust gas purification device to eliminate pollution such as smoke and dust, ensuring a good working environment.
3. The locomotive is equipped with a dual brake system of hand brake and foot brake (air brake), and an air sand sprinkler.

Diesel Engine



RY1115DFB Direct-Injection Explosion-Proof Diesel Engine



RY2110DFB Direct-Injection Explosion-Proof Diesel Engine

MINING EQUIPMENT

Application scope

The explosion-proof diesel engine is suitable for underground coal mines, where there are gas and coal dust explosion sites, and is widely matched with coal mining machinery such as mining, transportation, lifting and ventilation.

Main features

1. The explosion-proof diesel engine is easy to operate, has high power, low fuel consumption, low noise, and strong replace ability of parts and components.
2. The explosion-proof diesel engine is equipped with an exhaust gas purification device to eliminate pollution and ensure a good working environment

Main Accessories

customized



small sprocket



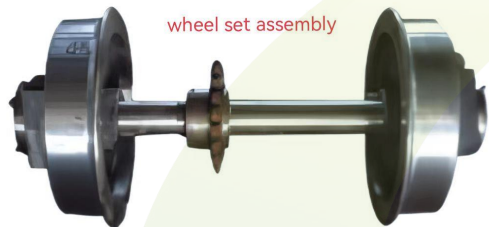
gearbox assembly



locomotive drive sprocket



wheel set assembly



cover assembly



fork



release bearing and seat



brake parts



ball seat



fork axle seat



clutch assembly



bearing seat



chain



main gear lever

